

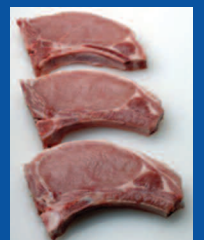
SLICER

Model 975 Series



*Patent Pending
Smearless Slicing Design*

*Proprietary low friction coated
slicer blade, combined with
water spray at variable volume
and application
rates, minimize
dust and smear.
Ideal for bone-in
pork and lamb*



**Using Crust Frozen or Tempered
Products, Slice Uniform Portions
Quickly...Precisely...*PROFITABLY***

ROSS[®] 975

The 975 series slicer is ideal for slicing crust chilled or tempered bone-in pork, lamb, and veal as well as boneless meats. Products are firmly held in vertical chutes and fed into cut zone with constant pressure yielding consistent thickness slices.

PROCESSOR BENEFITS

- Vary slice thickness for individual primals and batch uniform-thickness slices to facilitate packing and increase line efficiency.
- Enable thickness averaging to eliminate end cuts and increase yields.

KEY FEATURES

- **Easy Load Chutes:** Chutes include full length access door to facilitate product loading.
- **Air Operated Chute Weight:** Chute product follower securely holds product in place with constant pressure during slicing.
- **Thickness Averaging:** For pressed or square end products, slice thickness automatically adjusts eliminating end cut.
- **Variable Thickness Control:** Programmable controls enable individual primals to be sliced at variable thicknesses meeting merchandising requirements.
- **Roll Away Cover:** Slicer cover and chute assembly rolls away, exposing cutter area for ease of cleaning and maintenance. Chutes remain on slicer for cleaning.



The ROSS
Advantage
Is...
VERSATILITY!

SPECIFICATIONS	TECHNICAL SPECIFICATIONS	975
	Slice Thickness Range	0.25" to 1.5" (6.25 mm – 48 mm)
	Slice Rate	Variable to 280 slices/min
	Chute Size	Up to 6"W x 11"L (152 mm W x 275 mm L)
	Conveyor Width	7" (177 mm)
	Product Temperature Range	25°F to 29°F (-4°C to -2°C)
	Utility Requirements	200-460V • 50/60 Hz • 36.2 - 14.2 Amp Water: up to 3 gpm @ 60 psi (3.8 l/min @ 4.14 Bar) Air 1 cfm @ 90 psi (.47dm ³ /s @ 6.2 Bar)
	Machine Dimensions	74" L x 30" W x 86" H (1879 mm L x 762 mm W x 2184 mm H)
	Machine Weight	2,075 lbs (943 kg)



Ross Industries, Inc.
5321 Midland Road
Midland, VA 22728

540-439-3271 • 540-439-2740 Fax
www.rossindinc.com • E-mail: sales@rossindinc.com

Represented by: