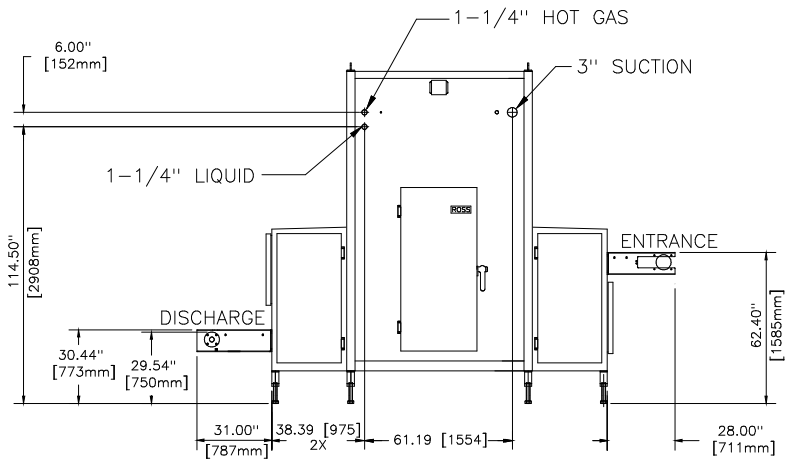
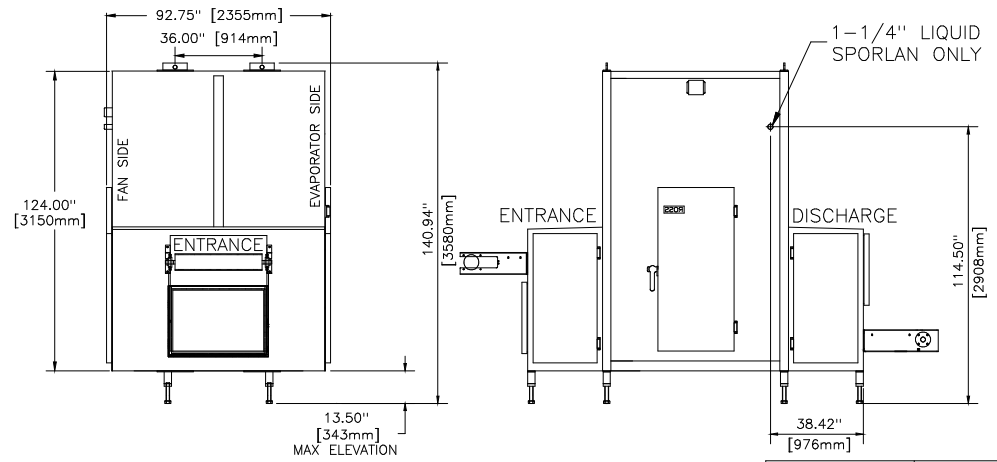


VIEW AT MINIMUM ELEVATION

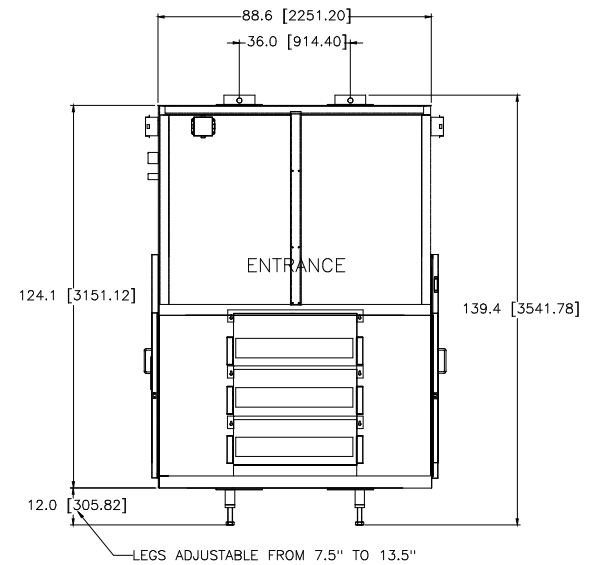
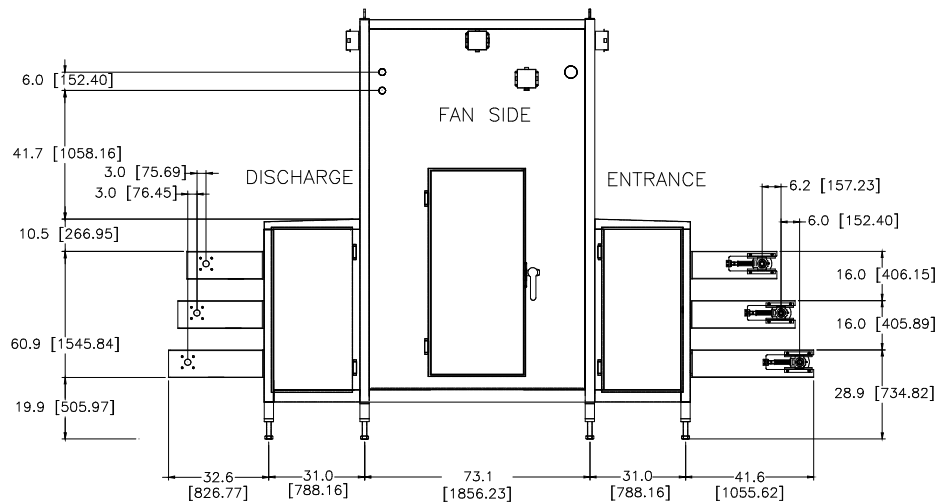
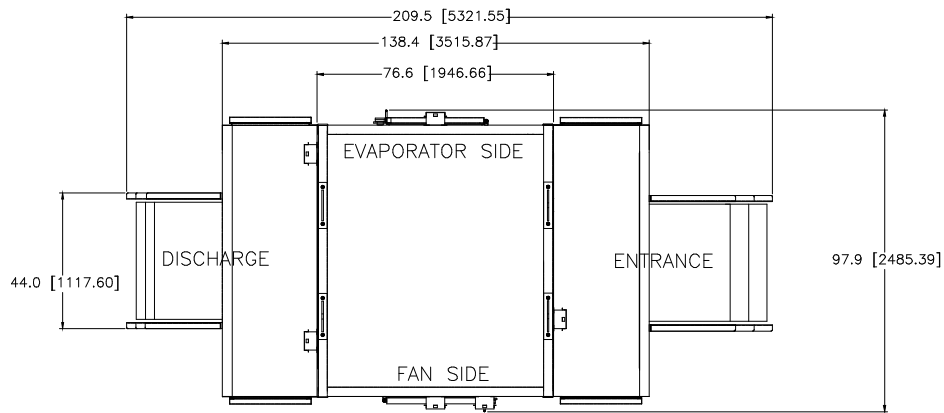


VIEW AT MAXIMUM ELEVATION

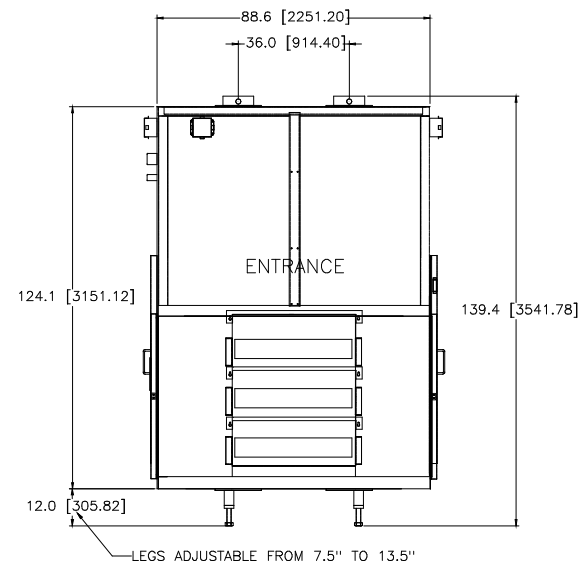
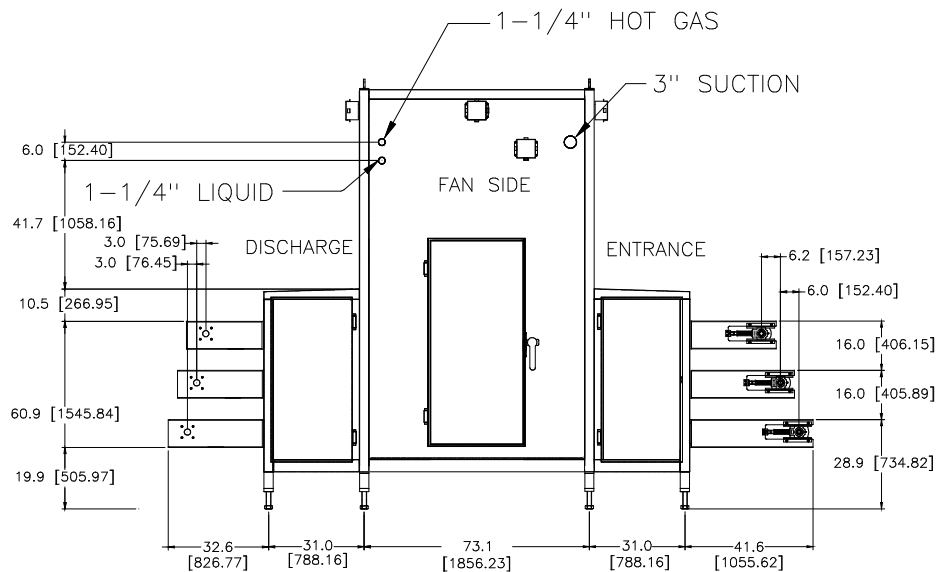
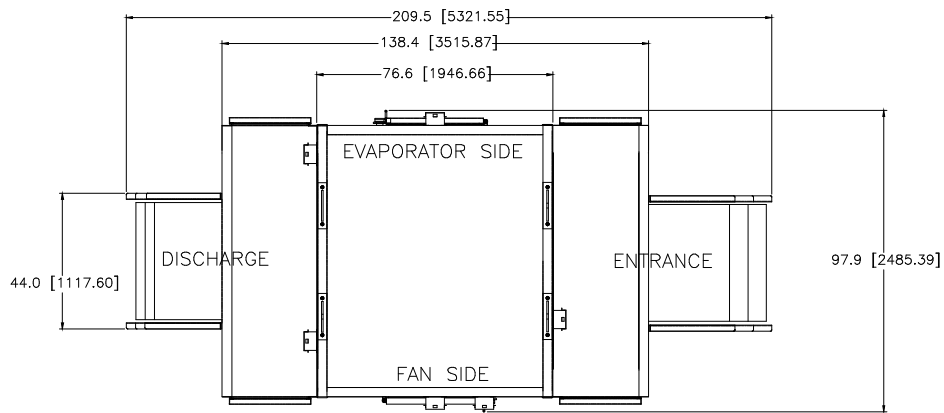


NOTES:  
ALL MEASUREMENTS ARE APPROXIMATE

NEXT ASSY: NEXT	DB FILE: 1MOD_CAS
<b>ROSS INDUSTRIES INC.</b> MIDLAND, VIRGINIA 22728 USA	
TITLE: LAYOUT_1MOD_CAS_CE	
TOLERANCES - UNLESS SHOWN	MATERIAL: MATL
.XXX ± .005	DIMENSIONS & FINISH: FINISH
.XX ± .020	ANGLE ± 0°30'
FINISH: 125 ✓	TOLENCES PER AMS 114.5-1982
DATE: 1/5/05	SCALE: NONE
DES: DY	CHK: DY
APP: .	1MOD_CAS_CE
	REV.



NEXT ASSY:		DB FILE: 1MODIND_CAS_CE	
<b>ROSS INDUSTRIES INC.</b>			
MIDLAND, VIRGINIA 22728 USA			
TITLE LAYOUT 1 MOD IND CAS CE			
TOLERANCES - UNLESS SHOWN		MATERIAL: AS NOTED	
.XXX ± .005		FINISH: AS NOTED	
.XX ± .020		DIMENSIONS & TOLERANCES PER ANSI Y14.5-1982	
ANGLE ± 0°30'		BLC     REV.	
FINISH 125 ✓			
DATE: 9/15/08	SCALE: 1 : 60		
DES	DRN	CHK	APP
JET	LC	.	.
		1MODIND_CAS_CE	



NEXT ASSY:		DB FILE: 1MODIND_CE	
<b>ROSS INDUSTRIES INC.</b> MIDLAND, VIRGINIA 22728 USA			
TITLE LAYOUT 1 MOD IND CE			
TOLERANCES - UNLESS SHOWN		MATERIAL: AS NOTED	
.XXX ± .005		FINISH: AS NOTED	
.XX ± .020		DIMENSIONS & TOLERANCES PER ANSI Y14.5-1982	
ANGLE ± 0°30'		BLC     REV.	
FINISH 125 ✓			
DATE: 9/15/08		SCALE: 1 : 60	
DES	DRN	CHK	APP
JET	LC	.	.
1MODIND_CE			